

Stribling Road Improvements

Madison County, Mississippi



PROJECT MANAGER

Shannon Wells, PE, PS

1076 Highland Colony Parkway
Suite 325

Ridgeland, MS 39157

601-941-3252

MSWells@GarverUSA.com

Madison County

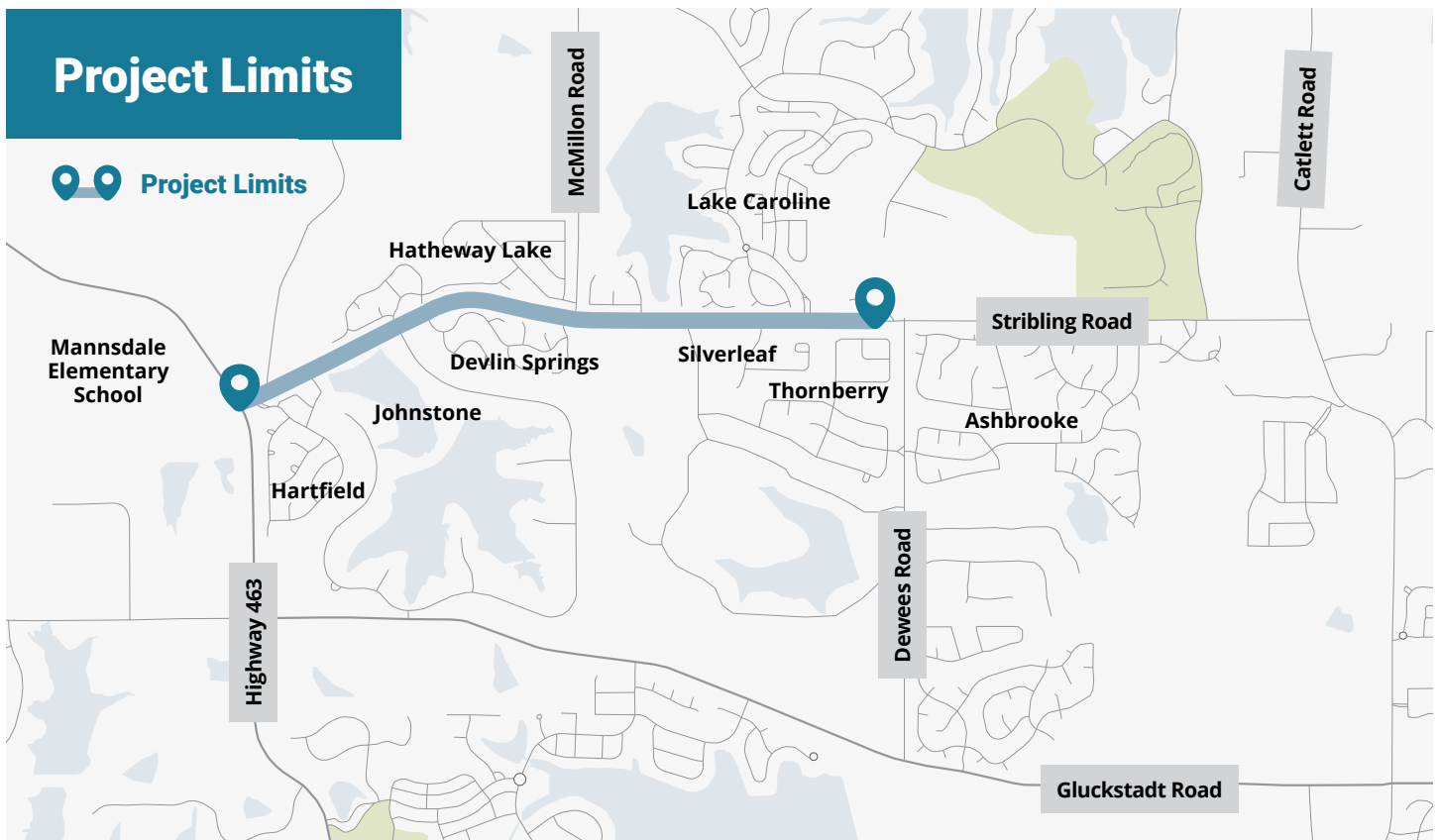
Project Description

Stribling Road Improvements from
Highway 463 to Dewees Road



Project Limits

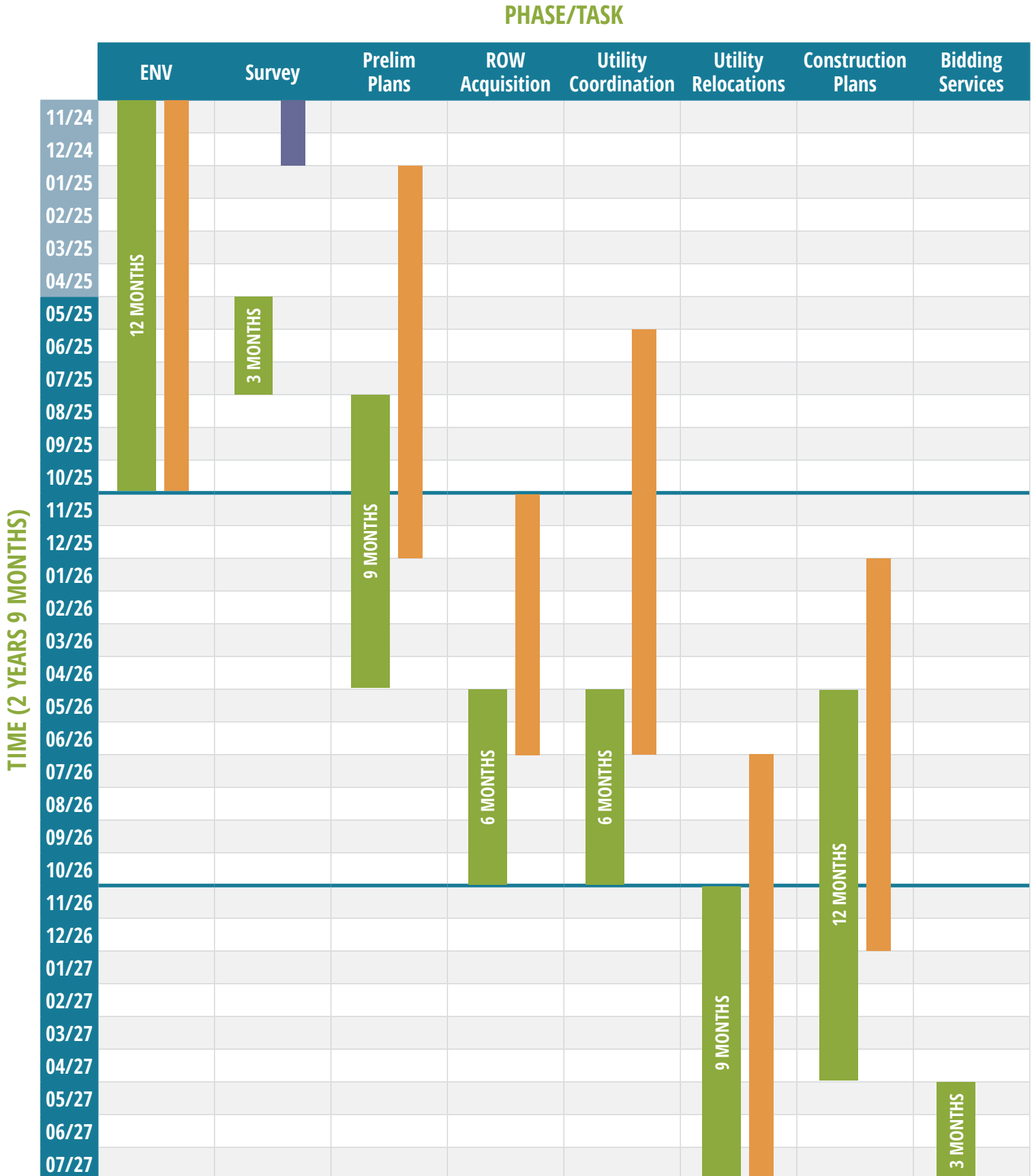
Project Limits



Project Design Schedule

Legend

- Original Preliminary Schedule
- Updated Schedule (April 21, 2025)
- Substantially Complete



Stribling Road Improvements

April 21, 2025 Update



Progress to Date

Stribling Road (Highway 463 to Dewees Road)

Contract Value: \$803,000

Contract NTP: November 4, 2024

Amount Invoiced to Date: \$267,484.04

■ Environmental

- Report is substantially complete, awaiting completion of updated preliminary roadway design information
- Cultural resources survey completed – no adverse impacts due to project

■ **Utilities:** Existing utilities have been marked and surveyed. In-person meetings with utility companies have been scheduled over the next couple of weeks to discuss impacts and schedule for relocation.

■ **Traffic Analysis:** Traffic model supports a 5-lane section east of McMillon Road and a 3-lane section west of McMillon Road. Intersection improvements (i.e. traffic signal, roundabout) at Camden Crossing are warranted based on post-project conditions.

■ **Roadway:** Embankment footprint and construction limits have been developed for the project length including the updated 3-lane section

■ **Geotechnical:** Draft report has been completed and indicates unsuitable material (i.e. Yazoo clay, soft material) present throughout the entire segment east of McMillon Road. Unsuitable material is present in isolated locations west of McMillon Road.

■ **ROW:** Preliminary design progress indicates approximately +/- 35 parcels affected, based on a curb and gutter section throughout. This does not include utility easements for relocation(s). +/- 55 parcels would be affected for an open ditch section.

Anticipated 3-Month Projection of Work

■ Environmental

- Wetlands: Submit wetlands report to USACE
- Cultural: Complete report and to submit to MDAH

■ Utilities:

- Hold coordination meetings and develop schedules for relocation
- Begin permitting process for gas pipeline crossing

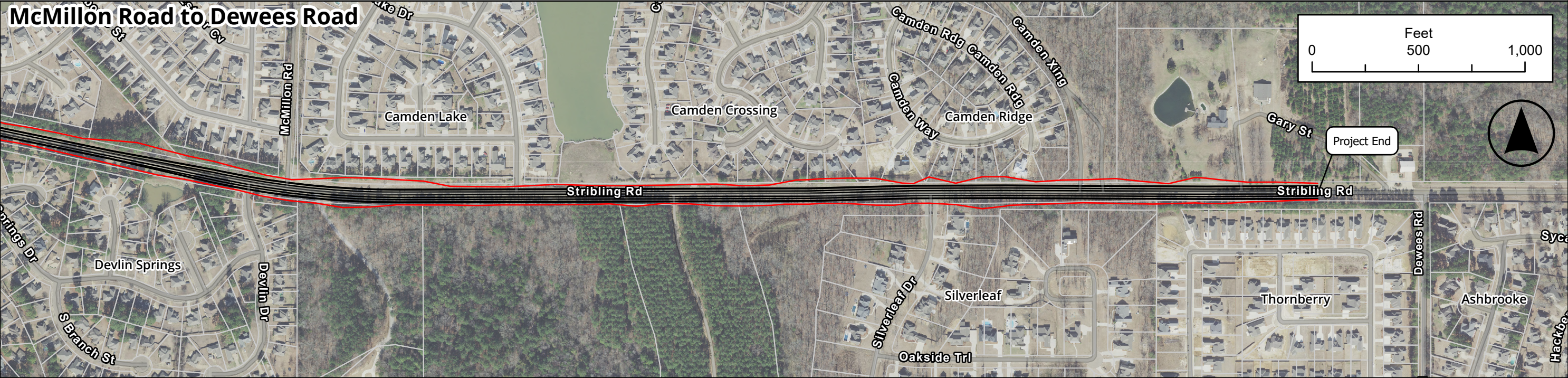
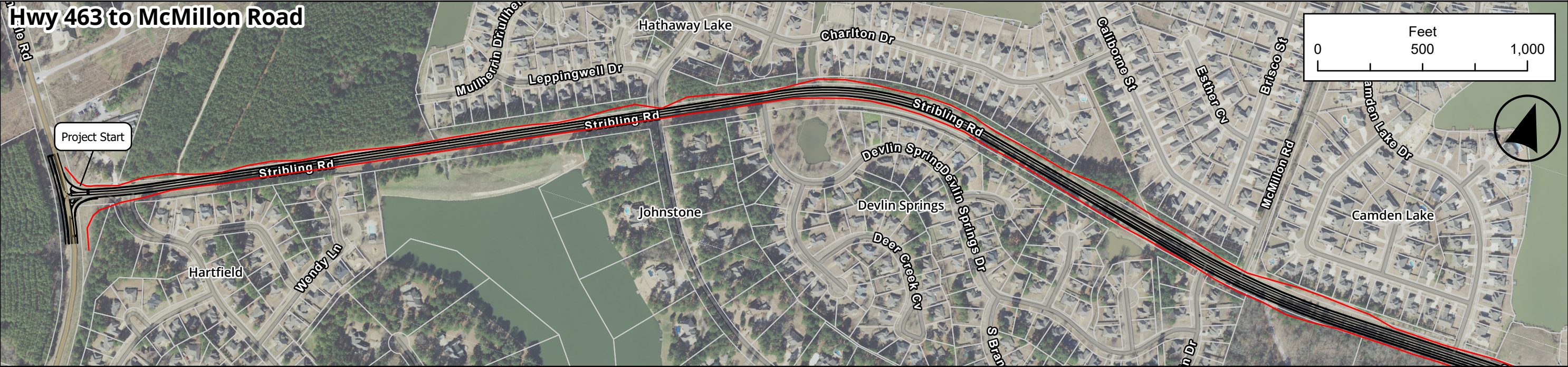
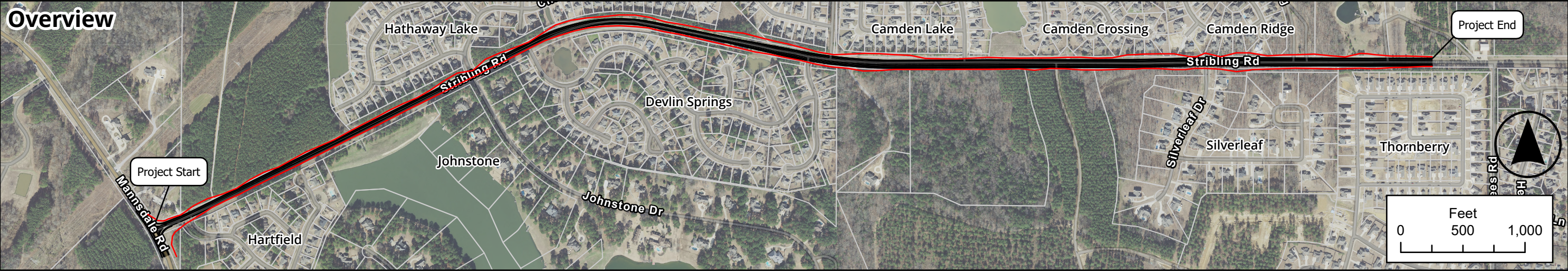
■ **Traffic Analysis:** Complete report, including a recommendation for intersection improvements at Camden Crossing

■ **Geotechnical:** Complete final report

■ Roadway:

- Begin development of preliminary design drawings, including storm drainage, construction phase sequencing, and maintenance of traffic
- Begin design of intersection improvements at Camden Crossing

■ **ROW:** Begin title work for affected parcels



Overview and Layout	GARVER NO	2401883
	FILE	Stribling Road 2401883.aprx
	DATE	20250417
	SCALE	see scale bar
VERSION NO		1.0

Stribling Road

Proposed Road Widening - Hwy 463 to Dewees Road

Project Extents

Proposed Roadway

Parcels

Image Source: MARISS
Parcel Source: Madison Co. GIS Viewer